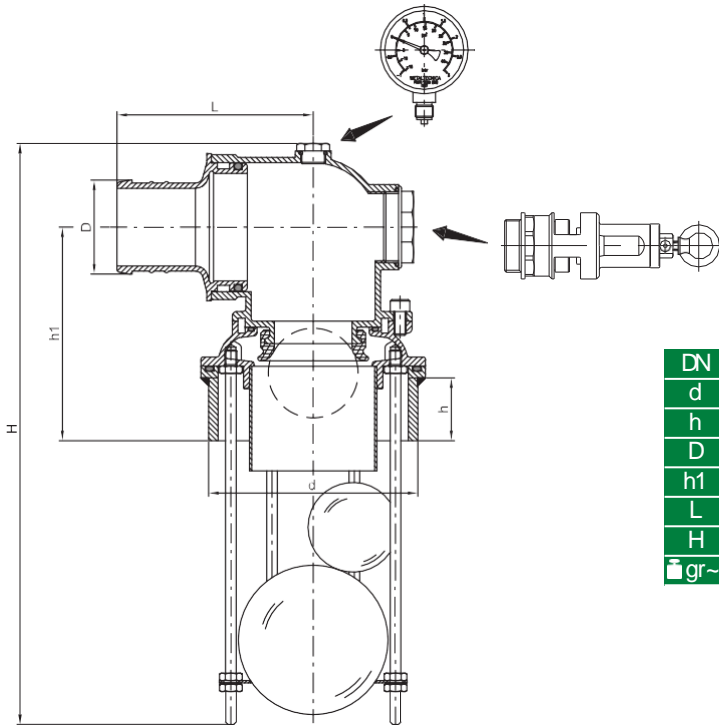




# art. 0160

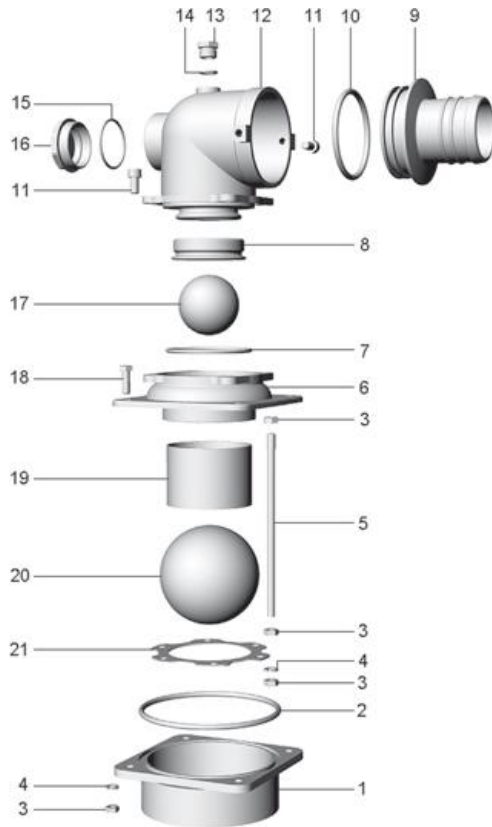
*válvula de llenado con dos bolas*Aspirazione massima: 8.000 lt/min  
Suction capacity: 8.000 lt/min

DN	45	50	60	75	80
d	140	140	140	168	168
h	50	50	50	60	60
D	45	50	60	75	80
h1	145	145	145	162	162
L	130	130	130	145	145
H	370	370	370	430	430
gr~	6.150	6.100	6.250	8.650	8.700

Codici di ordinazione  
Purchase article numbers

Valvola di troppo pieno da mm 45 a 2 sfere Two balls overflow valve mm45	ARZO0160 045 000
Valvola di troppo pieno da mm 50 a 2 sfere Two balls overflow valve mm50	ARZO0160 050 000
Valvola di troppo pieno da mm 60 a 2 sfere Two balls overflow valve mm60	ARZO0160 060 000
Valvola di troppo pieno da mm 75 a 2 sfere Two balls overflow valve mm75	ARZO0160 075 000
Valvola di troppo pieno da mm 80 a 2 sfere Two balls overflow valve mm80	ARZO0160 080 000





Condizioni di esercizio  
Work conditions

DN	45 ÷ 80
P(Bar)	4
P(PSI)	60
T °C	-15 +80

FOS	CODICE / CODE	DENOMINAZIONE	DENOMINATION	MATERIALE	MATERIAL
1	GHAC0160 045 003	MANICOTTO FLANGIATO 4"	FLANGED SLEEVE 4"	ACCIAIO	STEEL
1	GHAC0160 070 003	MANICOTTO FLANGIATO 6"	FLANGED SLEEVE 6"	ACCIAIO	STEEL
2	.OR0160 045 005	OR210 (Ø133,3 × 5,34) 4"	CRING210 (Ø133,3 × 5,34) 4"	GOMMANBR70	NBR70 RUBBER
2	.OR0074 150 011	OR362 (Ø158,1 × 5,34) 6"	CRING362 (Ø158,1 × 5,34) 6"	GOMMANBR70	NBR70 RUBBER
3	DAAC0180 045 012	DADOM8×5	NUTM8×5	ACCIAIOINOX AISI 304	AISI 304 STAINLESS STEEL
4	ROAC0180 045 011	RONDELLA Ø14 × 8,2 × 0,8	WASHER Ø14 × 8,2 × 0,8	ACCIAIOINOX AISI 304	AISI 304 STAINLESS STEEL
5	TAZC0160 045 018	TIRANTE M8×230 (4")	CONNECTION ROD M8×230 (4")	ACCIAIOINOX AISI 304	AISI 304 STAINLESS STEEL
5	TAZC0160 070 018	TIRANTE M8×280 (6")	CONNECTION ROD M8×280 (6")	ACCIAIOINOX AISI 304	AISI 304 STAINLESS STEEL
6	FOZC0160 045 001	CORPO INFERIORE 4"	LOWER BODY 4"	OTTONE UNIEN 1982	UNIEN 1982 BRASS
6	FOZC0160 070 001	CORPO INFERIORE 6"	LOWER BODY 6"	OTTONE UNIEN 1982	UNIEN 1982 BRASS
7	.OR0160 045 007	OR4312 (Ø179 × 3,53) 4"	CRING4312 (Ø179 × 3,53) 4"	GOMMANBR70	NBR70 RUBBER
7	.OR0160 070 007	OR4450 (Ø113,9 × 3,53) 6"	CRING4450 (Ø113,9 × 3,53) 6"	GOMMANBR70	NBR70 RUBBER
8	GZOM0240 045 019	ANELLO ALABRO Ø60 (4")	BRIMMED GASKET Ø60 (4")	GOMMANBR60	NBR60 RUBBER
8	GZOM0240 070 019	ANELLO ALABRO Ø80 (6")	BRIMMED GASKET Ø80 (6")	GOMMANBR60	NBR60 RUBBER
9	FOZC0240 045 07D	RACCORDO DRITTO Ø45	STRAIGHT CONNECTION Ø45	OTTONE UNIEN 1982	UNIEN 1982 BRASS
9	FOZC0240 050 07D	RACCORDO DRITTO Ø60	STRAIGHT CONNECTION Ø60	OTTONE UNIEN 1982	UNIEN 1982 BRASS
9	FOZC0240 060 07D	RACCORDO DRITTO Ø80	STRAIGHT CONNECTION Ø80	OTTONE UNIEN 1982	UNIEN 1982 BRASS
9	FOZC0240 075 07D	RACCORDO DRITTO Ø75	STRAIGHT CONNECTION Ø75	OTTONE UNIEN 1982	UNIEN 1982 BRASS
9	FOZC0240 080 07D	RACCORDO DRITTO Ø80	STRAIGHT CONNECTION Ø80	OTTONE UNIEN 1982	UNIEN 1982 BRASS
10	.OR0160 045 006	OR179 (Ø175,6 × 5,34)	CRING179 (Ø175,6 × 5,34)	GOMMANBR70	NBR70 RUBBER
11	VTAC0020 100 009	VITE TEM8×16	SCREW TEM8×16	ACCIAIOINOX AISI 304	AISI 304 STAINLESS STEEL
12	FOZC0180 045 004	CORPO SUPERIORE 4"	UPPER BODY 4"	OTTONE UNIEN 1982	UNIEN 1982 BRASS
12	FOZC0180 070 004	CORPO SUPERIORE 6"	UPPER BODY 6"	OTTONE UNIEN 1982	UNIEN 1982 BRASS
13	TOR1027 010 015	TAFPO3/8"	COVER 3/8"	OTTONE UNIEN 12164	UNIEN 12164 BRASS
14	.OR1027 006 002	CR117 (Ø113,1 × 2,62)	CRING117 (Ø113,1 × 2,62)	GOMMANBR70	NBR70 RUBBER
15	.OR0180 070 017	CR3231 (Ø158,4 × 2,62)	CRING3231 (Ø158,4 × 2,62)	GOMMANBR70	NBR70 RUBBER
16	SOZC0180 070 020	TAFPO2"	COVER 2"	OTTONE UNIEN 12165	UNIEN 12165 BRASS
17	ARZC0915 060 000	SFERA Ø60 (4")	BALL Ø60 (4")	POLIPROPILENE	POLYPROPYLENE
17	ARZC0915 080 000	SFERA Ø80 (6")	BALL Ø80 (6")	POLIPROPILENE	POLYPROPYLENE
18	VTAC0160 045 009	VITE TEM8×25	SCREW TEM8×25	ACCIAIOINOX AISI 304	AISI 304 STAINLESS STEEL
19	TAZC0160 045 008	TUBO ACCIAIO Ø85 × 1,5 × 65 (4")	STEEL PIPE Ø85 × 1,5 × 65 (4")	ACCIAIOINOX AISI 304	AISI 304 STAINLESS STEEL
19	TAZC0160 070 008	TUBO ACCIAIO Ø108 × 2 × 85 (6")	STEEL PIPE Ø108 × 2 × 85 (6")	ACCIAIOINOX AISI 304	AISI 304 STAINLESS STEEL
20	ARZC0917 100 000	SFERA DI SPINTA Ø100 (4")	THRUSTING BALL Ø100 (4")	POLETILENE	POLYETHYLENE
20	ARZC0917 120 000	SFERA DI SPINTA Ø120 (6")	THRUSTING BALL Ø120 (6")	POLETILENE	POLYETHYLENE
21	SAZC0160 045 010	FLANGIA 4"	FLANGE 4"	ACCIAIOINOX AISI 304	AISI 304 STAINLESS STEEL
21	SAZC0160 070 010	FLANGIA 6"	FLANGE 6"	ACCIAIOINOX AISI 304	AISI 304 STAINLESS STEEL