



Accesorios para cisterna

art. 0810 filetto GAS  
art. 0811 filetto NPT



valvula de seguridad (vacío)

Art. 0810 / Item 0810

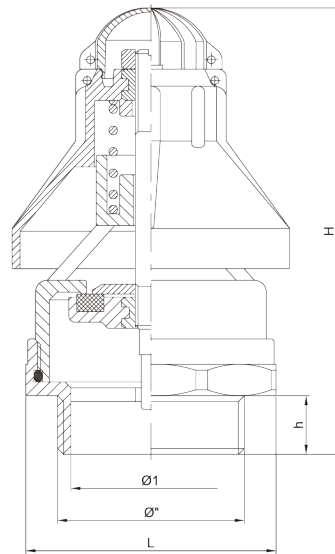
Filettatura: gas cilindrica UNI EN ISO 228/1

Thread: BSP parallel UNI EN ISO 228/1

Art. 0811 / Item 0811

Filettatura: conico NPT USAS B 2.1

Thread: conical NPT USAS B 2.1



Ø''	1"1/2
Ø1	41
H	113
h	15
L	67
gr ~	460

Codici di ordinazione

Purchase article numbers

	Filetto GAS GAS thread	Filetto NPT NPT thread
--	---------------------------	---------------------------

Valvola di depressione 1"1/2  
Depression valve 1"1/2

ARZO 0810 040 000

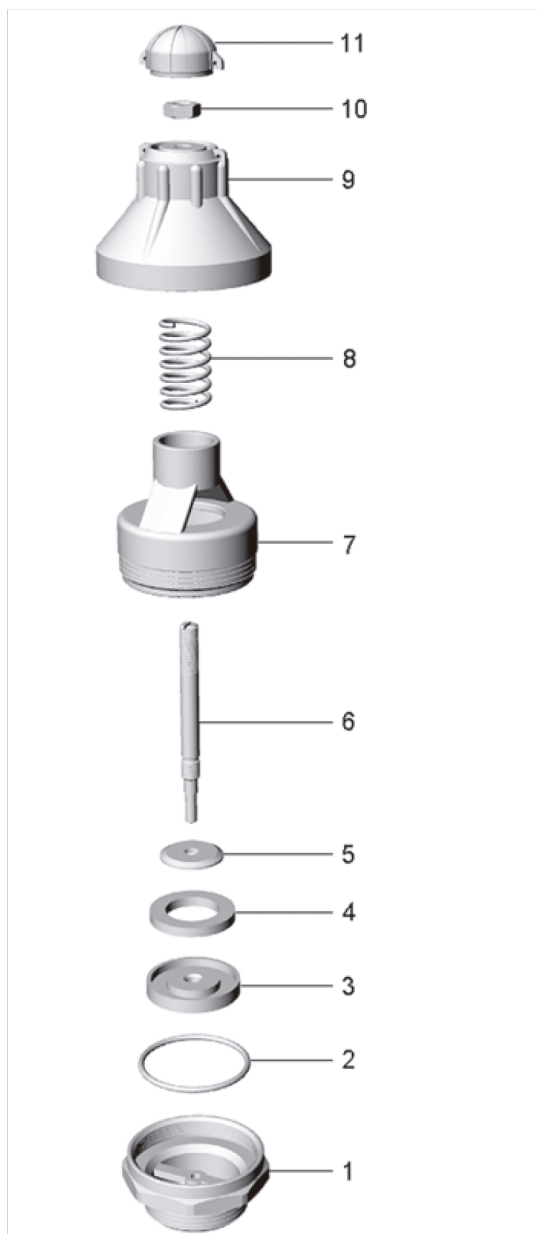
ARZO 0811 040 000

A richiesta si fornisce la valvola tarata e piombata / On request the valve is supplied setted and sealed

## Accesorios para cisterna

filetto GAS  
filetto NPT

art. 0810 filetto GAS  
art. 0811 filetto NPT



### Campo di taratura

Setting range

DN	1"1/2
P (bar)	-0,3 ÷ -0,8
P (PSI)	-4,3 ÷ -11,6
T (°C)	-15 +60

POS.	CODICE / CODE	DENOMINAZIONE	DENOMINATION	MATERIALE	MATERIAL
1	SOZO 0810 040 009	RACCORDO SEDE 1"1/2 GAS	SEAT CONNECTION 1"1/2 GAS	OTTONE UNI EN 12165	UNI EN 12165 BRASS
1	SOZO 0811 040 009	RACCORDO SEDE 1"1/2 NPT	SEAT CONNECTION 1"1/2 NPT	OTTONE UNI EN 12165	UNI EN 12165 BRASS
2	..OR 0810 040 010	OR 3218 (Øi 55,25×2,62)	O RING 3218 (Øi 55,25×2,62)	GOMMA NBR 70	NBR 70 RUBBER
3	SPZO 0810 040 005	PORTAGUARNIZIONE	GASKET HOLDER	OTTONE UNI EN 12164	UNI EN 12164 BRASS
4	GGOM 0860 032 004	GUARNIZIONE Ø30 × 24 × 4,3	GASKET Ø30 × 24 × 4,3	GOMMA NBR 60	NBR 60 RUBBER
5	TOZO 0810 040 002	ROSETTA Ø28 × 2,5 × M8	WASHER Ø28 × 2,5 × M8	OTTONE UNI EN 12164	UNI EN 12164 BRASS
6	TOZO 0810 040 003	ASTA M8	STEM M8	OTTONE UNI EN 12164	UNI EN 12164 BRASS
7	FOZO 0810 040 001	CORPO	BODY	OTTONE UNI EN 1982	UNI EN 1982 BRASS
8	MOAC 0810 040 006	MOLLA	SPRING	ACCIAIO INOX AISI 302	AISI 302 STAINLESS STEEL
9	SPZO 0810 040 007	CAMPANA DI REGOLAZIONE	ADJUSTING BELL	NYLON + VETRO	NYLON + GLASS
10	DAAC 0180 045 012	DADO M8 × 5	NUT M8 × 5	ACCIAIO INOX AISI 304	AISI 304 STAINLESS STEEL
11	SPZO 0810 040 008	TAPPO	COVER	NYLON + VETRO	NYLON + GLASS